
REACH

Accelerating the scale up of food and nutrition actions

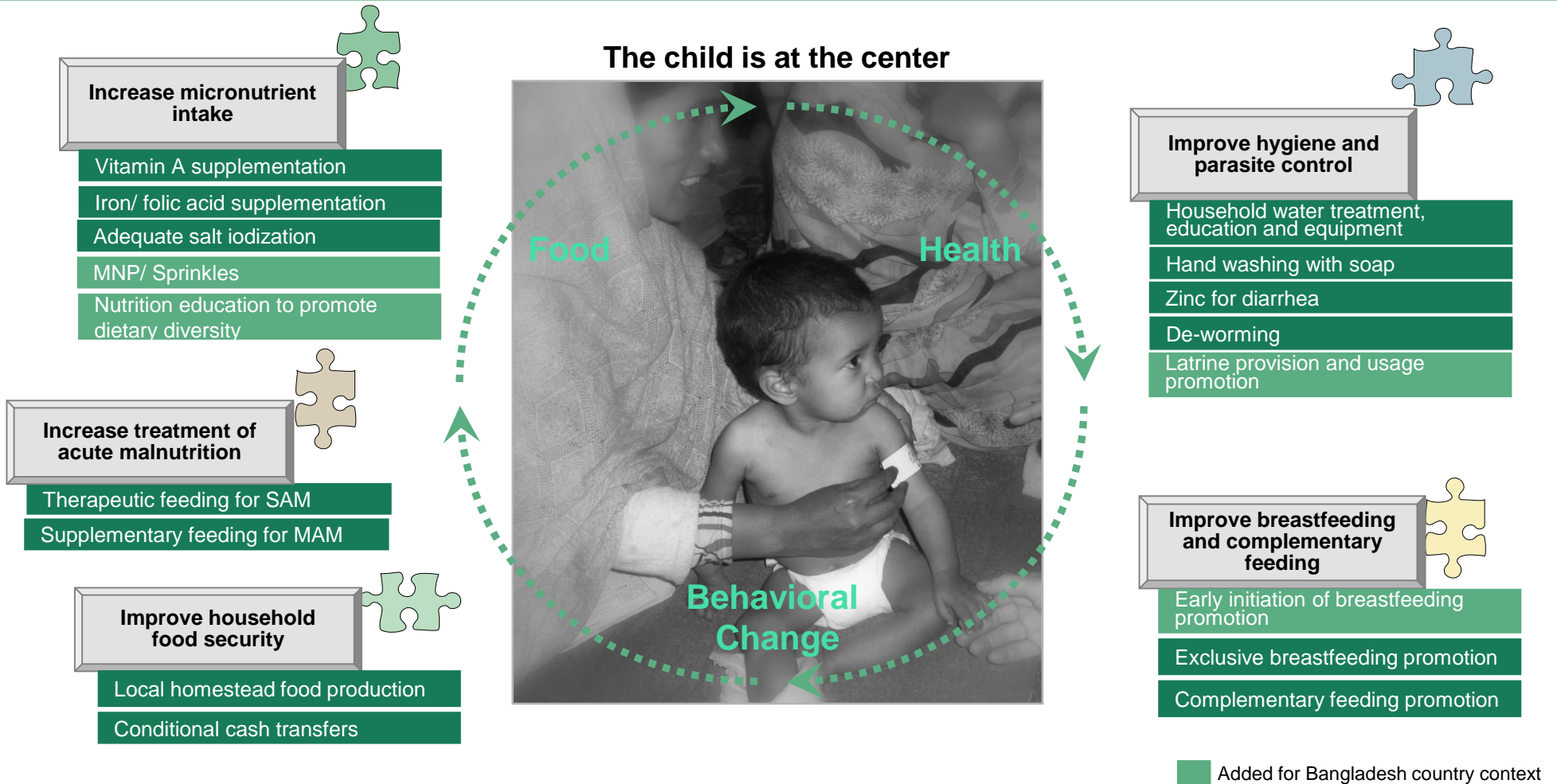
REACH - Bangladesh

Presentation of the Results of the Stakeholder Analysis in
Satkhira District, 2011

February 2012



REACH-Recommended Interventions For Satkhira District



Most REACH-Recommended Interventions Coverage is Low

(SLIDE TO BE UPDATED AS SOON AS THE SATKHIRA BASELINE 2011 DATA WILL BE AVAILABLE)



	Key problems	Problem Indicator	Status	Interventions	Coverage
BEHAVIOR/ CARE	Poor IYCF Practices	% infants breastfed within one hour of birth	36 %	Early initiation of breastfeeding promotion	
		% infants 0-6 months exclusively breastfed	48.7%	Exclusive breastfeeding promotion	
		% infants 6-8 months who receive solid, semi-solid or soft foods along with breastmilk	57.6%	Complementary feeding promotion	
HEALTH	Soil, water borne & endemic diseases	% households using water treatment methods	6.7%	Household water treatment, education and equipment	
		% households with access to improved water source	85.5%		
		% population washing hands prior to eating	58.8%	Hand washing with soap	
		% children U5 with soil transmitted helminthes	44.6%	De-worming	
	High prevalence of acute malnutrition	% households with access to hygienic latrines	25.3%	Latrine provision and usage promotion	
		% children U5 with diarrhea	9.8%	Zinc for diarrhea	
FOOD	Insufficient macro and micronutrient intake	% children 6-59 months with severe acute malnutrition	3.4%	Therapeutic management of SAM	
		% children 6-59 months with mod. acute malnutrition	10.5%	Supplementary feeding for MAM	
		% children 9-11 months receiving Vit A supplements	82%	Vitamin A supplementation for children	
		% children 12-59 months receiving Vit A supplement	96%		
		% postpartum women receiving Vit A supplement	39%	Vitamin A supplement for postpartum women	
		% children U5 with iron deficiency anemia	67.9%	MNPs for children U5	
		% of pregnant women with iron deficiency anemia	38.8%	IFA supplements for pregnant women	
	Insufficient access to food	% households consuming salt adequately iodized	51%	Availability of adequately iodized salt	
		% households with poor/borderline food consumption scores	25%	Nutrition education for dietary diversity	
% population undernourished		26%	Local homestead food production		
	% population living under national poverty line	40%	Conditional cash transfers		

National Status
REACH-BCG 2010 (National Data)

REACH Satkhira 2011 Coverage

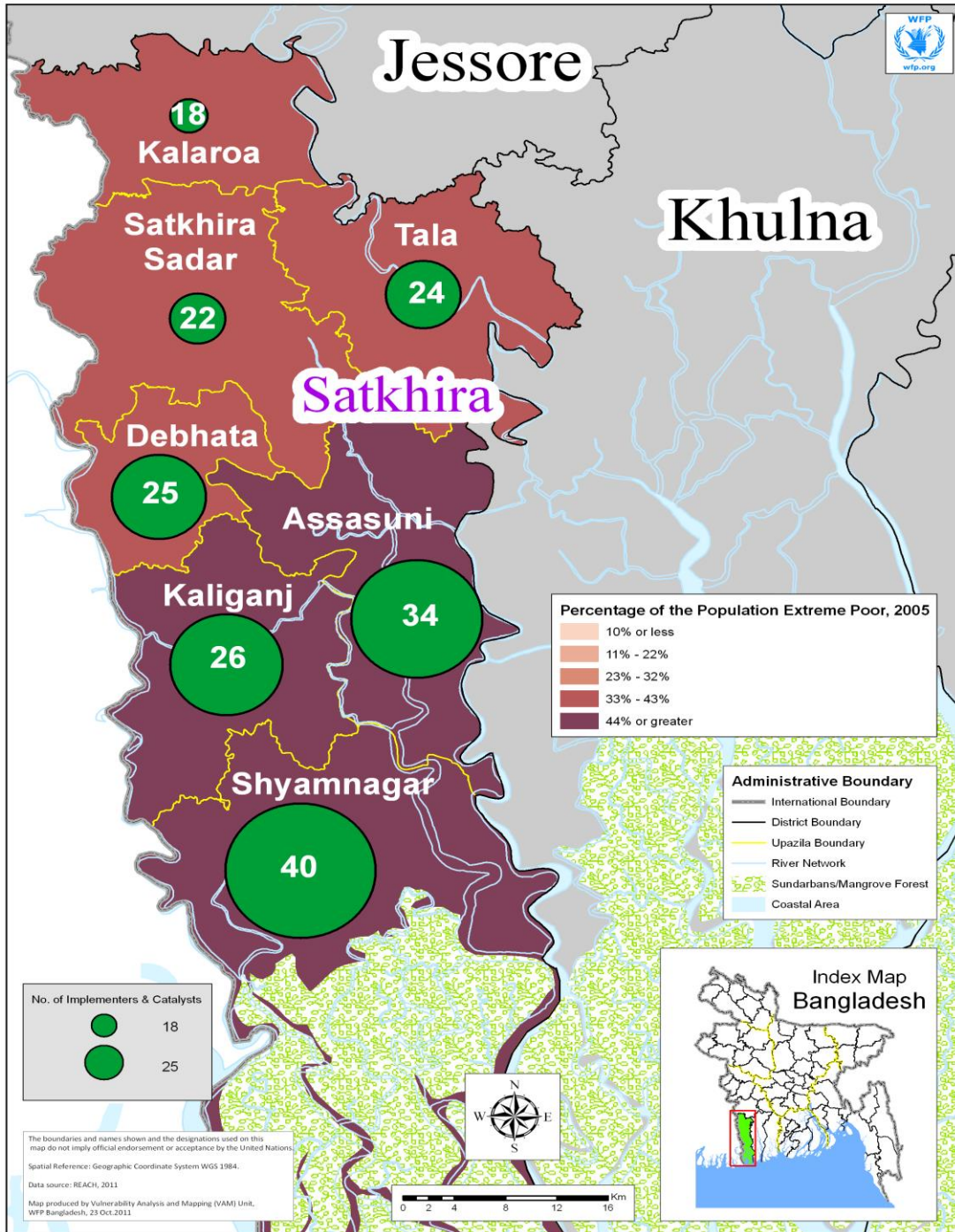
- < 5% coverage
- 5 – 35% coverage
- 36 – 64 % coverage
- 65 – 95 % coverage
- > 95% coverage

Secondary Data Review Supplemented With Technical Interviews, And Coverage Data Collection

	Secondary data review	Technical interviews	Coverage data collection
Objective	<ul style="list-style-type: none"> Development of initial stakeholder profiles and interview tracking lists 	<ul style="list-style-type: none"> Contact stakeholders involved in Satkhira and acquire the first findings of the landscaping phase 	<ul style="list-style-type: none"> Estimation of coverage of the REACH focus interventions
Description	<ul style="list-style-type: none"> Compilation of several stakeholder profile lists to create a master interview list for Satkhira Stakeholders include: GoB agencies, UN Agencies, Donors, INGOs, NGOs, Private Sector and Academia 	<ul style="list-style-type: none"> Make a short list of stakeholders working in Satkhira with regards to REACH specific interventions Meet stakeholders during mission to Satkhira Conduct follow up interviews, via e-mail, phone and in person 	<ul style="list-style-type: none"> Gather comprehensive data on interventions delivered by the stakeholder using an excel template questionnaire Data collected on: <ul style="list-style-type: none"> Target groups Coverage estimates (beneficiary and budget) Project duration Activity type/Delivery channel Partners and Donors involved Upazila coverage
Status	<p>A list of 150 stakeholders created of GoB, UN agencies, INGOs/NGOs and other actors</p>	<p>Approx. 135 responses from all stakeholders contacted and interviewed</p>	<p>84 technical questionnaires, in addition to secondary data and information gathered at upazila level</p>

Stakeholder Map Satkhira

	Treatment Interventions		Preventative Interventions							
	Therapeutic/Supplementary feeding	Zinc supplementation	Breast-feeding/Complementary feeding	Vitamin A suppl/Deworming	Micro-nutrient powder	Hand-washing with Soap	House-hold water treatment	Latrine provision, usage, promotion	Local Homestead food production	Transfer and safety nets
Donor	ECHO	USAID CIDA	JICA EU	USAID WB SIDA	USAID	USAID AusAid EU-ECHO	CIDA AusAid DANIDA EU-ECHO	ADB EU ECHO	EU DFID SDC	ECHO DFID ChristAid
Catalyst	WFP	UNICEF	Alive & Thrive CARE, FAO	UNICEF MI	GAIN UNICEF MI	UNICEF Care WVB	UNICEF NGO Forum DWSS	UNICEF NGO Forum Oxfam	FAO	WFP UNDP
GOB and its programs		MoHFW DPHE	MoHFW MoWCA IPHN	MoHFW DPHE		MoHFW DPHE	Ministry of Agriculture DPHE	MoLGRD	Ministry of Agriculture	MoWCA Ministry of Finance
Implementers	Shushilan	BDRCS RKH PKS EADA NoboJibon	BRAC Setu Satkhira VOSD Bhumijo Fondation	BDRCS Unnayan BRAC VOSD SetuSatkhir	BRAC PKS VOSD Shushilan EADA NoboJibon	HYSAWA Solidarit PKS KSDO Mukti NaltaHos	WaterAid IDEAL Setu Kushtia HYSAWA Concern	Solidarites Uttaran Water Aid HYSAWA Unnayan	BRAC IDEAL HKI, TMSS Muslim Aid Shushlian	BRAC Uttaran BDRCS IDEAL Shushlan Bhomisto
Private sector						Unilever	Unilever	Unilever	Kraft Unilever	
Delivery Channel	Field-worker; nutrition centres	Health centers, Door to door promotion	Clinics, mother-support-groups; door-to-door promotion,	Awareness campaign/, health centres, house visits CBOs	Para center/workers; pilots, house visits,	Group teaching; door-to-door; volunteers	Domestic visits; trainings in CBOs, VOs	Door-to-door promotion	Field workers; workshops, community Centers door-to-door;	local banks credit worker/posts door-to-door; CBOs



Stakeholder Geographic Distribution

Satkhira 2011 Population Data		
Upazila	Projected Popn, 2011	% of poverty (upper poverty line)
Assasuni	288, 419	70,30
Debhata	137, 639	56,60
Kalaroa	256, 425	49,00
Kaliganj	296, 681	74,90
Satkhira Sadr	474,852	46,20
Shymnagar	363,099	75,70
Tala	340,672	45,60
	2,157,787	Avg. 59,8

•Stakeholders divided into 2 groups:

Catalysts

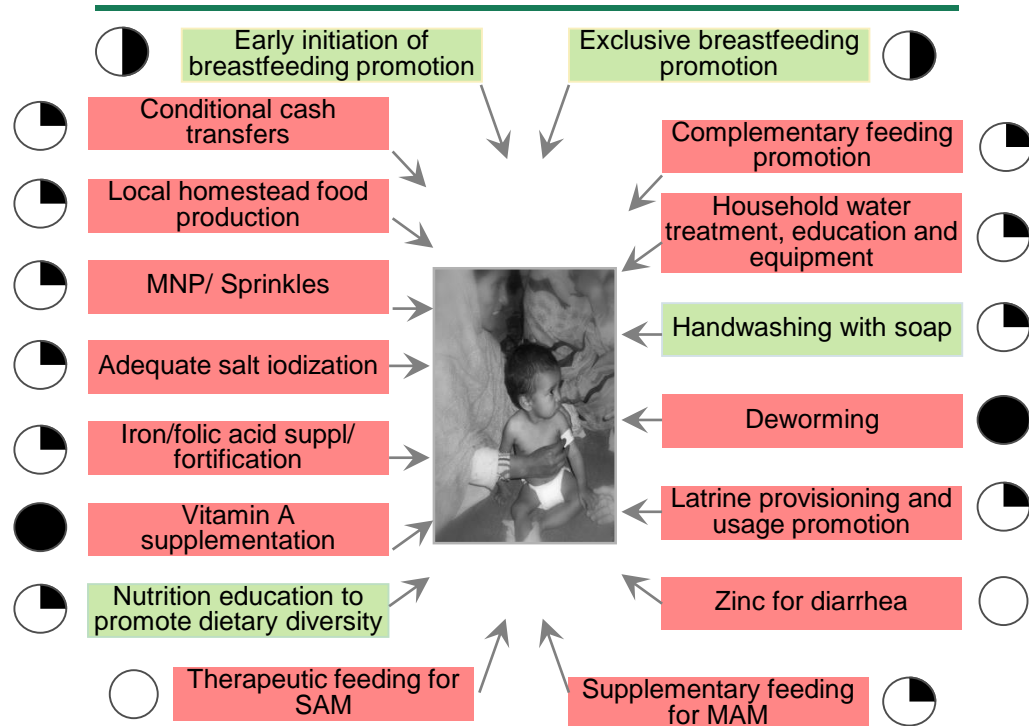
Implementers

- Kaliganj
- Assasuni
- Shymnagar

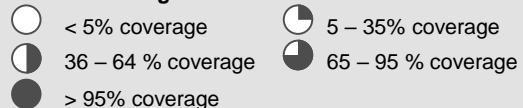
Upazillas with > 44% Popn Extreme Poor
Larger no. stakeholders

Most Interventions Require Improved Coverage, Satkhira 2011

Estimated coverage



National coverage



Intervention Type	Estimated Coverage (%)
1- Vitamin A supplementation	99*
2- Iron/folic acid supplementation/fortification	11
3- Adequate salt iodization	13
4- Micronutrient powder/Sprinkles	23
5- Zinc supplementation/ fortification	3
6- Nutrition education for dietary diversity	19
7- Therapeutic feeding for SAM	0
8- Supplementary feeding for MAM**	52
9- Local homestead food production	19
10- Social Transfers and safety nets (including conditional cash transfers)	15
11- Household water treatment, education and equipment	22
12- Hand washing with soap	24
13- Deworming	99*
14- Latrine provision and usage promotion	17
15- Early initiation of breastfeeding	50
16- Exclusive breastfeeding	38
17- Complementary feeding	47

Committed Investment

Interventions	2011	2012	2013	2014	2015
Vitamin A supplementation	27,612	10,228	7,696	5,700	5,700
Iron/folic acid supplementation/fortification	34,770	7,818	7,818	5,700	5,700
Adequate salt iodization	6,981	1,993	1,920	0	0
Micronutrient powder	12,127	186	0	0	0
Zinc supplementation/fortification	1,766	154	29	0	0
Nutrition education for dietary diversity	64,532	12,192	10,714	2,300	2,300
Therapeutic feeding for SAM	68,326	0	0	0	0
Supplementary feeding for MAM	71,842	1,500	1,500	1,500	1,500
Local Homestead food production	1,680,962	714,852	176,603	14,286	0
Transfers and safety nets	2,849,642	1,973,740	150,782	50,711	22,140
House-hold water treatment	897,290	853,433	698,247	191,125	8,000
Hand washing with soap	151,549	34,951	8,494	4,814	4,400
Deworming	1,502	114	0	0	0
Latrine provision and usage promotion	741,190	186,239	88,492	64,892	6,142
Early initiation of breastfeeding	8724	3745	2557	571	571
Exclusive breastfeeding	4,279	2,438	2,000	571	571
Complementary feeding	3,111	2,704	1,500	0	0
TOTAL in USD	6 625 605	3 806 287	1 158 362	342 170	57 024
TOTAL in Taka	463 792 350	266 440 090	81 085 340	2 3951 900	3 991 680

+ Committed Aggregated Investment over 5 years (2011-2015): US\$13.2 million

Organizations	Budget in USD	Comments
DAE/MOA	9, 929	From 2011 to 2014
MoH/NNS	274,714 (Per Year)	From July 2011 to June 2015
ADB*through LGED	285,714	Planned From 2012 to 2014
CARE	3,000,000	From 2011 to 2015
Hellen Keller International	1,000,000	From 2011 to 2015
Friendship	1,500,000	From 2011 to 2015
Christian Service Society	2,113,453	From 2011 to 2013
Others	3,901,182	From 2011 to 2014

GoB : NNS and other GoB investments to be added as data will be available

DECREASE PER YEAR

↘ **43%**

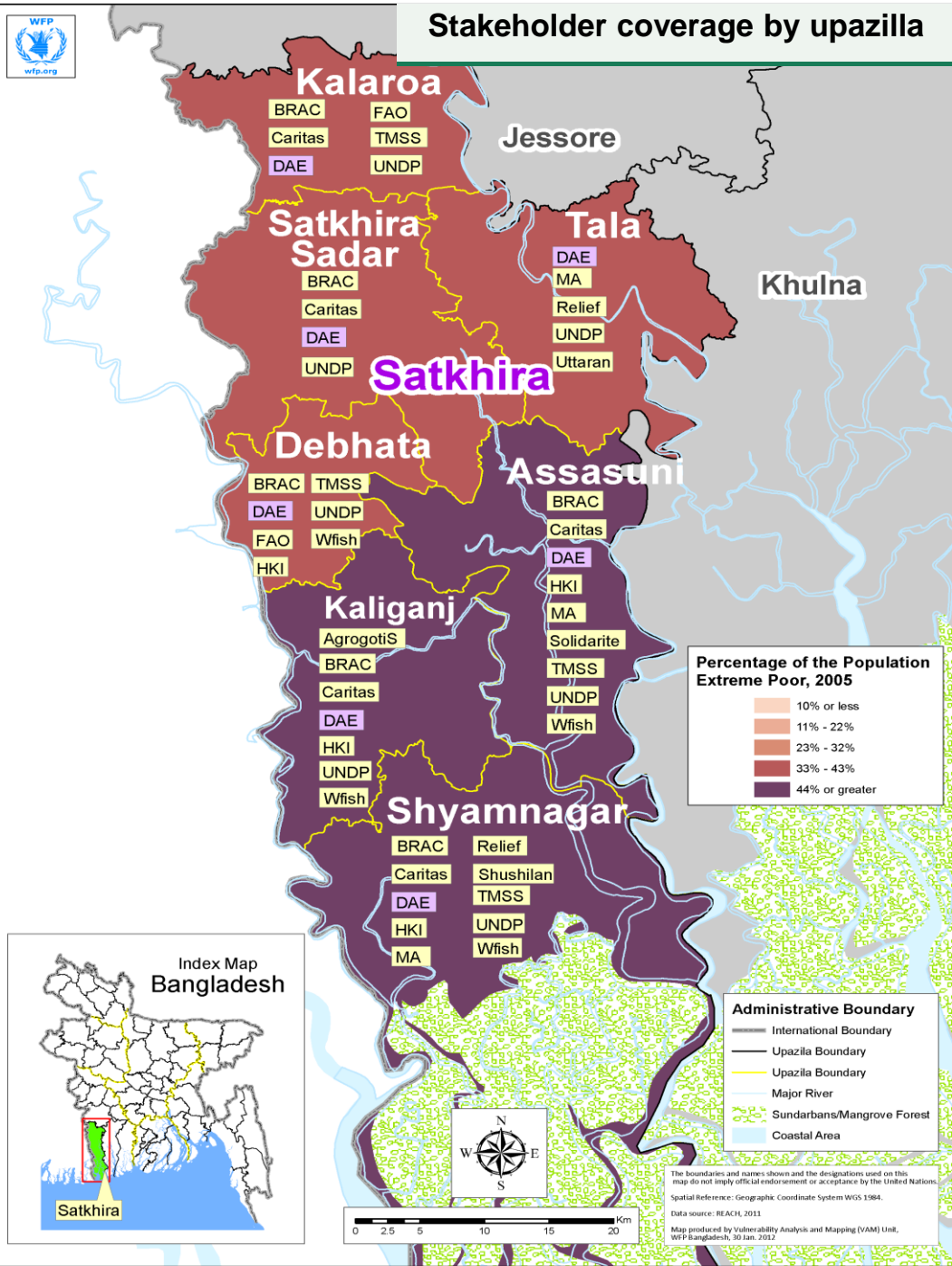
↘ **70%**

↘ **70%**

↘ **83%**



Stakeholder coverage by upazilla



Local Homestead Food Production

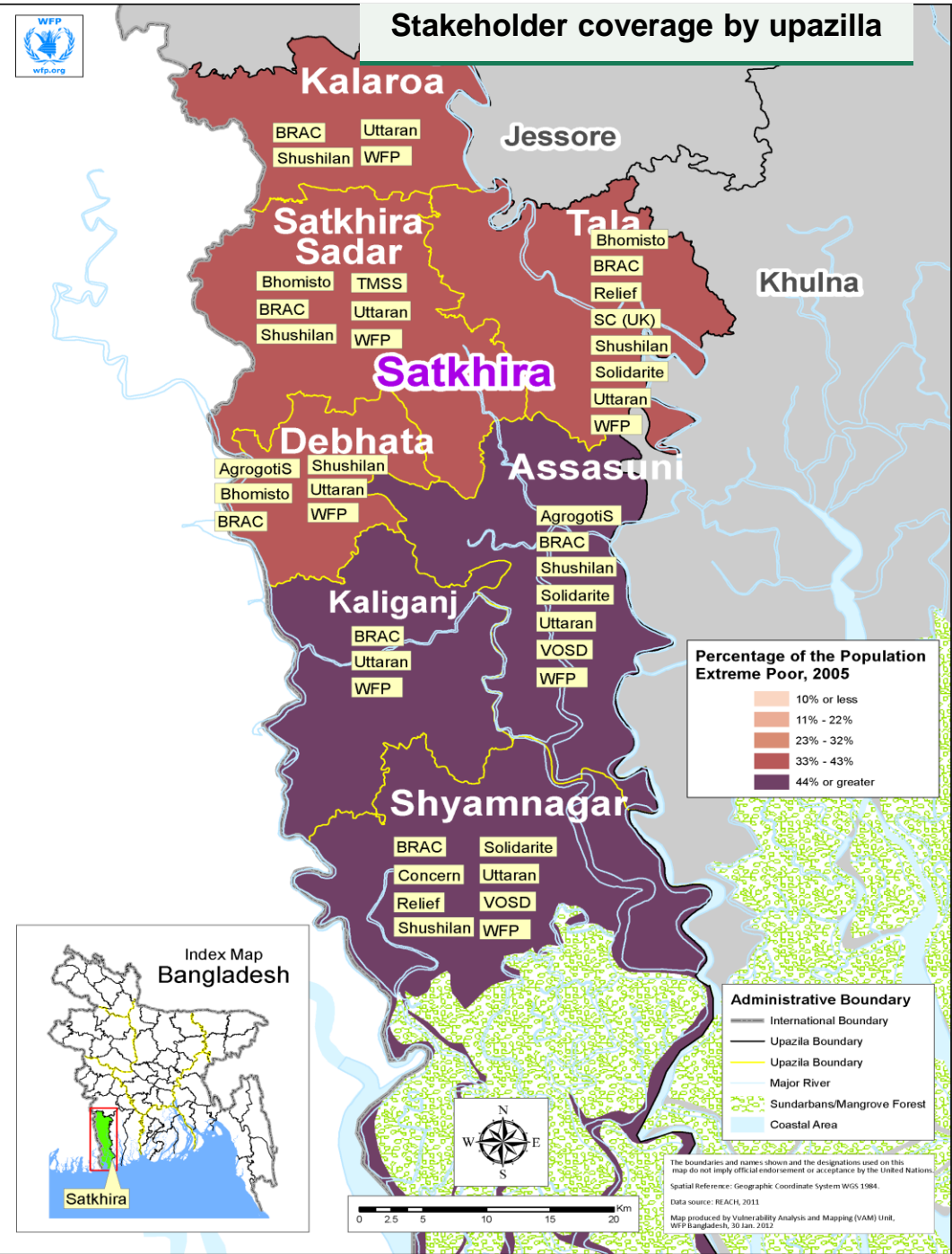
Intervention factsheet – Upazilla level estimation

Selected stakeholder activities and coverage

Coverage indicator	% population undernourished			
	National coverage	26%	Satkhira coverage	...% (to be updated)
Stakeholder (Total=34)	Est Benef. Covered	Est Benef. Covered HH	Upazilas	Est Budget in USD
FAO*implementing through Ashroy, TMSS	9,000	1,800	Deb, Kala	Multiple Projects
UNDP*implementing through Shushilan, Uttaran	24,570	4,914	All 7	Multiple Projects
Hellen Keller Intl (planned)	4,800	960	Assa, Deb, Kali, Shym	\$1 mil
Solidarites Intl	11,250	2,250	Assa	\$29,286
World Fish	3,150	630	Assa, Deb, Kali, Shym	\$93,330
WORLD VISION BD (ADP)	2,050	410	Assa, SS	\$1,000
BRAC	227,875	45,575	All 7	\$2.8 mil Multiple Projects
Shushilan	14,000	2,800	Shym	\$102,215
TMSS	1,107	222	SS	\$22,140
Progoti SUS	2,000	400	Assa, Shym	\$190,000



Stakeholder coverage by upazilla



Social Transfers & Safety Nets (Including CCT)

Intervention factsheet – Upazilla level estimation

Selected stakeholder activities and coverage

Coverage indicator	% population living under national poverty line			Est Budget in USD
	National coverage	Satkhira coverage	...%	
Stakeholder (Total=21)	Est Benef. Covered	Est Benef. Covered HH	Upazilas	Est Budget in USD
DWA *implementing through Bhomisto	5,590	1,118	All 7	\$67,080
WFP *implementing through GoB and Shushilan	165,000	5,000 +28,000	Assa, Deb, SS, Kal, Tala, Shym	\$1.7 mil + \$1.5 mil
Relief Intl (Planned)	1,750	350	Shym, Tala	\$100,000 ('12-'13)
Concern Worldwide *implementing through Shushilan	44,505	8,901	Shym	2,645,313
Save The Children JK *implementing through Uttaran	11,000	2,200	Tala	\$96,150
ACF *implementing through Agrogoti	23,000	4,600	Assa, Deb	\$199,793
BRAC	167,125	33,425	All 7	\$2.8 mil Mult Proj
Shushilan	43,050	8,610	SS, Shym, Tala	\$499,847
Uttaran (ER)	28,500	5,700	All 7	\$258,430
Agrogoti Sangstha (ER)	4,600	930	Assa, Deb	\$199,744 ('13)

Next Steps

- **Sharing the REACH Stakeholder Mapping Exercise among UN agencies, with GoB and other stakeholders**
- **Further development of tools**
- **Costing exercise**
- **Multi-sectoral Simulation Tool (MST) in partnership with the World Bank**
- **Resource allocation**