



REACH

ACCELERATING THE SCALE-UP OF FOOD AND NUTRITION ACTIONS

Hosted by the World Food Programme



World Food Programme



Food and Agriculture Organization of the United Nations

unicef



World Health Organization

REACH Facilitator Workshop

Addis Ababa

5 – 9 November 2012

Highlights from the Mapping Exercise in Bangladesh



REACH

ACCELERATING THE SCALE-UP OF FOOD AND NUTRITION ACTIONS

Hosted by the World Food Programme



World Food Programme

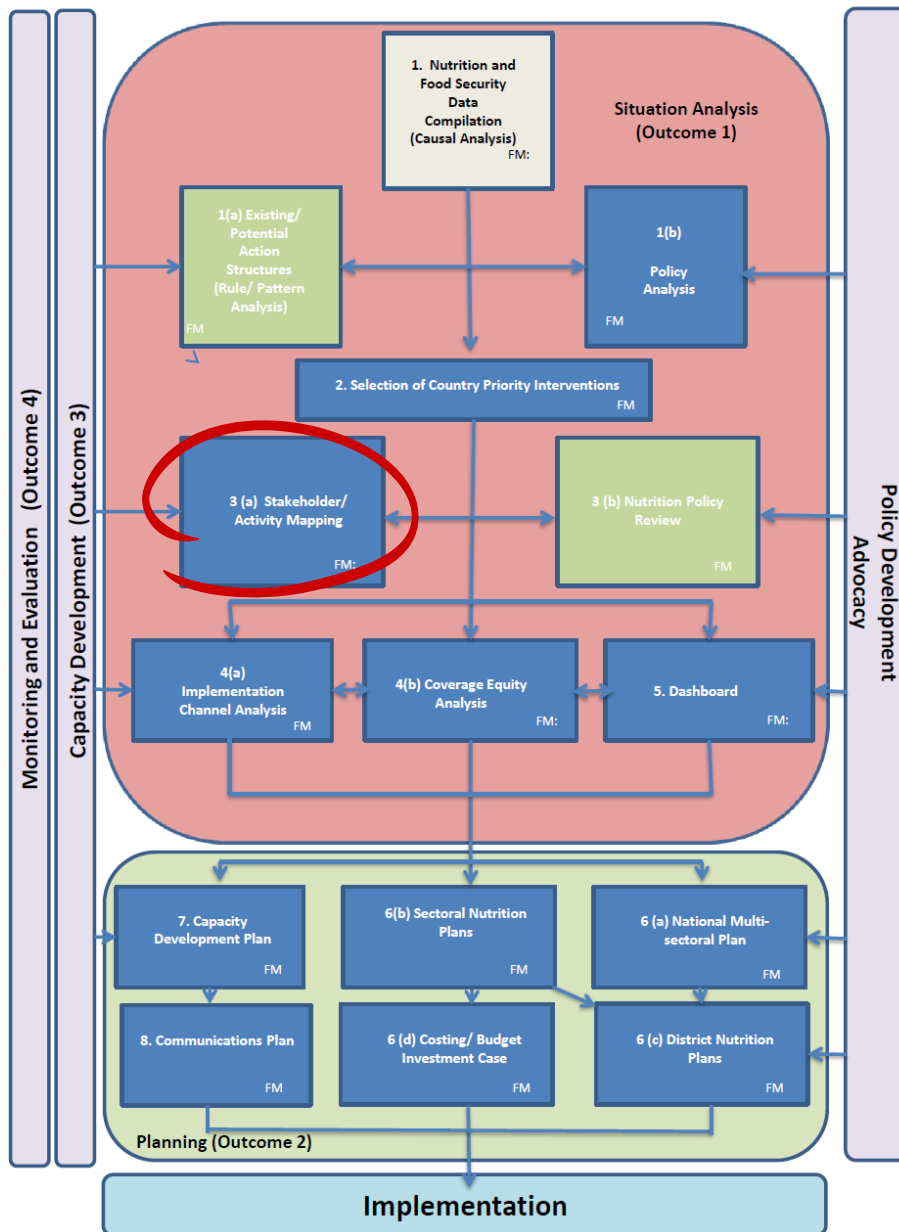


Food and Agriculture Organization of the United Nations



World Health Organization

Flow Diagram of the REACH Process





REACH

ACCELERATING THE SCALE-UP OF FOOD AND NUTRITION ACTIONS

Hosted by the World Food Programme



Bangladesh: Key milestones in each step of the process

National stakeholder analysis in preparatory phase, July 2010

Decision to focus on district level: choice of Satkhira District

Baseline survey in Satkhira, 2011 (HKI / UNICEF)

Satkhira Stakeholder mapping July-Nov 2011

Dissemination events June, 2012



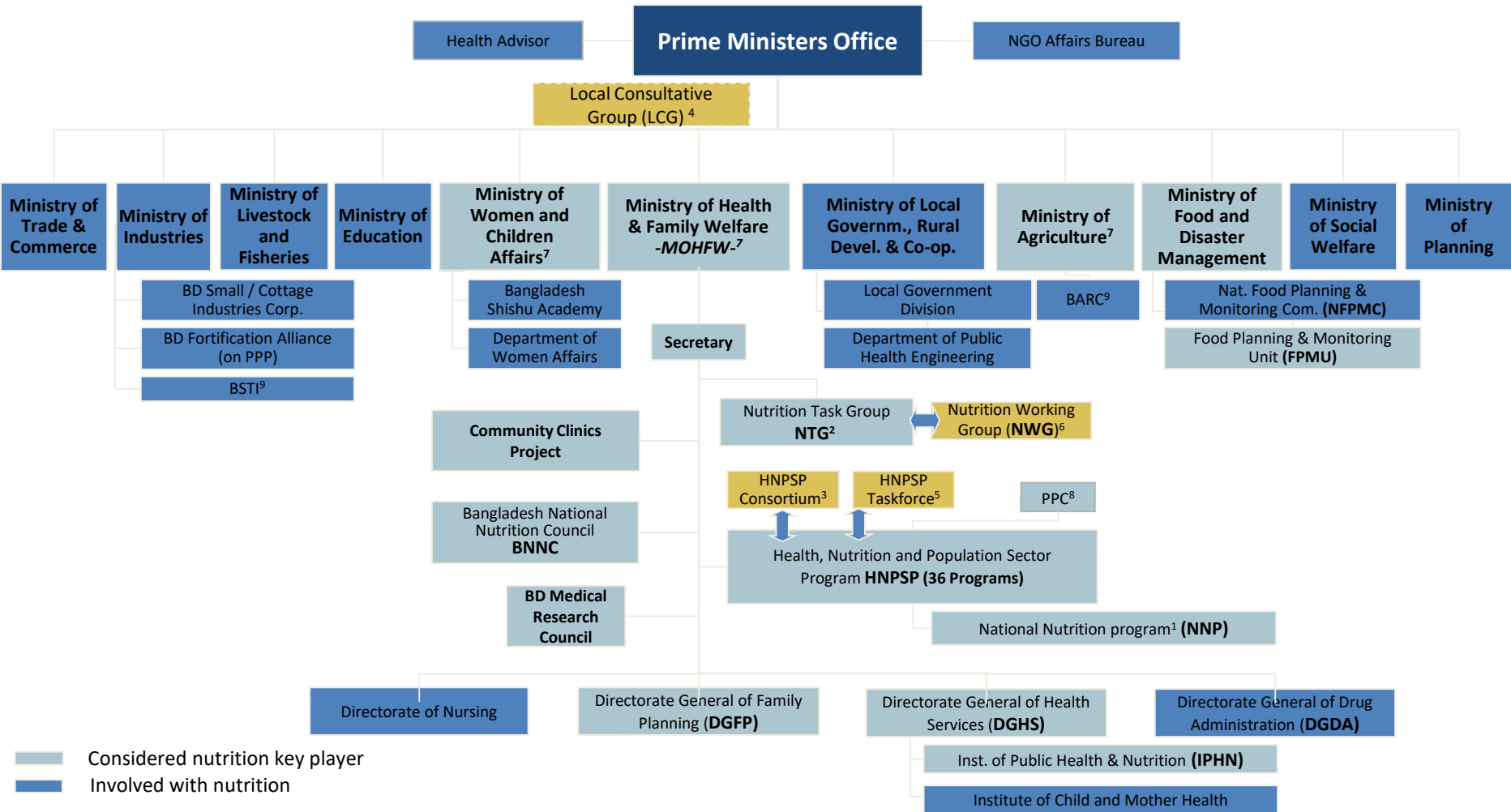
National: Multiple stakeholders are involved

Stakeholder Map Bangladesh

	Treatment Interventions			Preventative Interventions							
	Suppl- mentary feeding	Thera- peutic feeding	Zinc	ITN IPTp	Breastfeeding/ complement- ary feeding	De-worming / Vitamin A	Micro- nutrient supplem. ²	Hand- washing with Soap	House- hold water treatment	Condition- al Cash transfer	Homestead food production
Donor ⁴	USAID WB	USAID	CIDA USAID	GFATM ⁵	USAID, WB	Gov. of Japan- Hashimoto initiative; Gates Foundation	DFID EC Spanish MDG Fund	USAID	WB CIDA DFID USAID	Norwegian Emb.; USAID	AusAID, DANIDA, USAID, DFID, NOVIB, WB
Catalyst ⁶	UNICEF WFP, HKI ⁹	UNICEF UNHCR SC USA, Concern;	UNICEF WV GAIN	WHO	UNICEF WFP, WHO; HKI; BRAC	WFP ¹⁴ , UNICEF Alive & Thrive GAIN, CARE, StC, HKI ⁸ , ACF; MI ⁸	UNICEF WFP, BRAC FAO ¹⁰ ; MI WV; GAIN	UNICEF; WFP; StC.; HKI ; Care; Plan	UNICEF WHO	WFP FAO HKI	FAO, WFP HKI, Concern, WV
Government and its programs	NNP		MHFW ¹¹	MHFW ¹¹ (DG Health)	MHFW ¹¹ IPHN NNP	MHFW ¹¹ ; EPI-Campaign	MHFW ¹¹ NNP	MHFW ¹¹ Dept. of PH Engr. FPMC ³	Ministry of Agriculture MHFW ¹¹	Min. of prim. & Mass Educ.; Min. of Finance	DAE, RDA, FPMC ³
Implementer ⁷	TDH, ACF	ICDDR, B; ACF; TDH; IFRC MSF; SC	MSF	BRAC, MSF; VARD	BBF; ACF, MSF, TDG, StC, HKI, Plan; BRAC	DSK, MSF, TDH ⁸ ; StC; Plan	MSF, StC; HKI; Plan; BRAC ICDDR, B; ACF, TDH	BRAC; MSF; ACF; TDH, DSK; StC; Plan	BRAC; NGO Forum ¹² ; DSK; TDH	BRAC, TMSS Grameen; DSK	ACF; local NGOs; DSK; TDH; StC
Private sector			SMC Grameen Danone	BASF Grameen		Standard Chart. Bank	Renata, Grameen- Danone BASF, SMC	Unilever, Reckitt	Grameen Veolia	Grameen	Grameen
Touch point/ Delivery Channel	Field- worker; health clinics	Health centers; hospitals pilot- projects; camps	Health centers, EPI	Comm. volunteer s/ health centers	Volunteers training centers; clinics, mother- support-groups; door-to-door	Awareness campaign/ EPI, health centres, house visits	Para center/ workers; pilots, house visits, EPI	Group teaching; door- to-door; volunteers	Domestic visits; trainings in CBOs ¹	VO's ¹³ ; MC branches; local banks credit worker/ posts	Field workers; workshops, community centers

Governance of nutrition is crosscutting

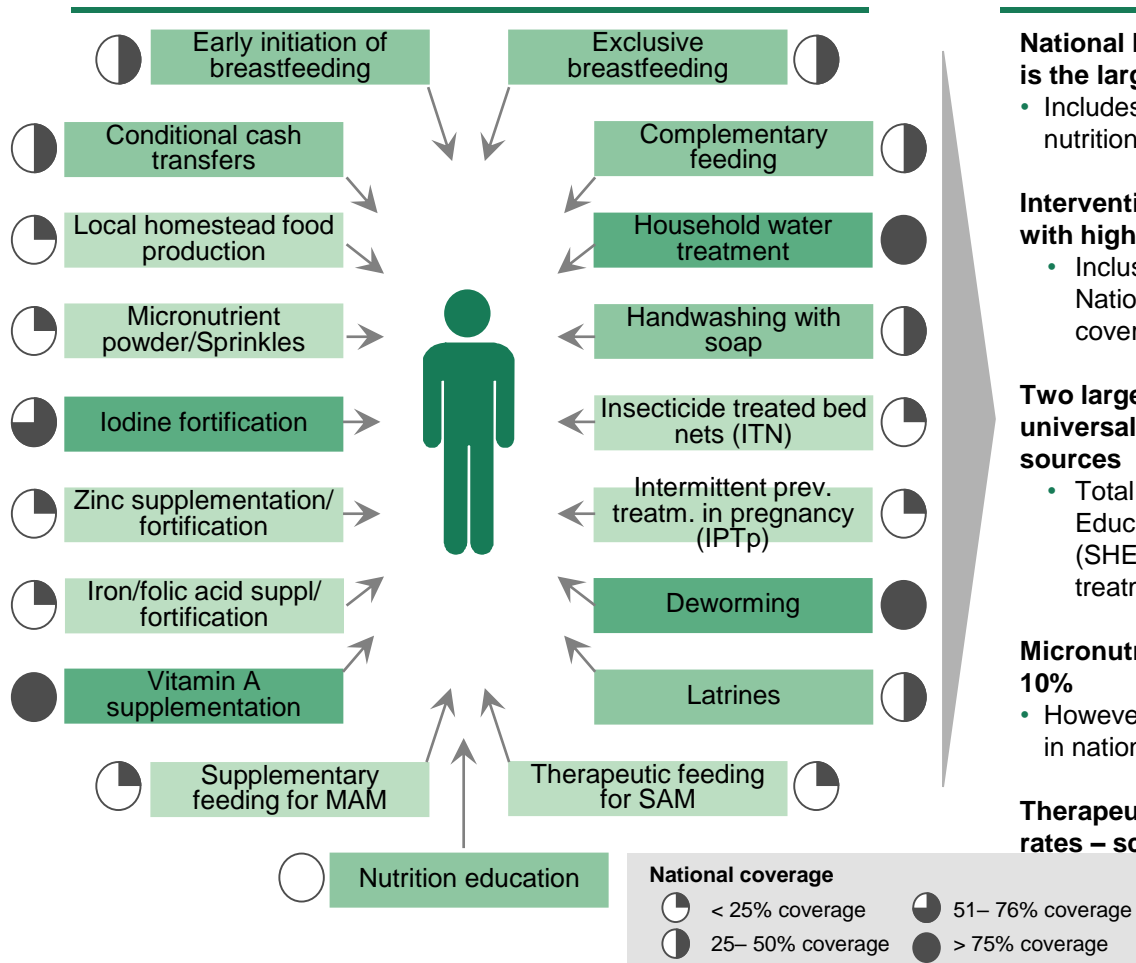
(Institutional mapping)



Only few interventions reach national coverage

NNP the largest program covers 25% of the country

Majority of interventions with unsatisfactory national coverage



Key takeaways

National Nutrition program (NNP) covering 25% of population is the largest nutrition focused program

- Includes promotion of breastfeeding, complementary feeding, nutrition education and distribution of select micronutrients

Interventions included in government supported programs with high national coverage

- Inclusion of Vitamin A supplementation and deworming in National Immunization Day (NID) ensures nationwide coverage

Two large scale water and sanitation projects result in almost universal coverage in terms of access to improved water sources

- Total Sanitation Campaign and The Sanitation, Hygiene Education and Water Supply in Bangladesh Programme (SHEWA-B) result in high coverage for household water treatment intervention

Micronutrient powder/Sprinkles currently at a level of about 10%

- However scale-up plans driven by private sector will likely result in national level coverage

Therapeutic and supplementary feeding with low coverage rates – scale-up and improved coordination crucial



REACH

ACCELERATING THE SCALE-UP OF FOOD AND NUTRITION ACTIONS

Hosted by the World Food Programme



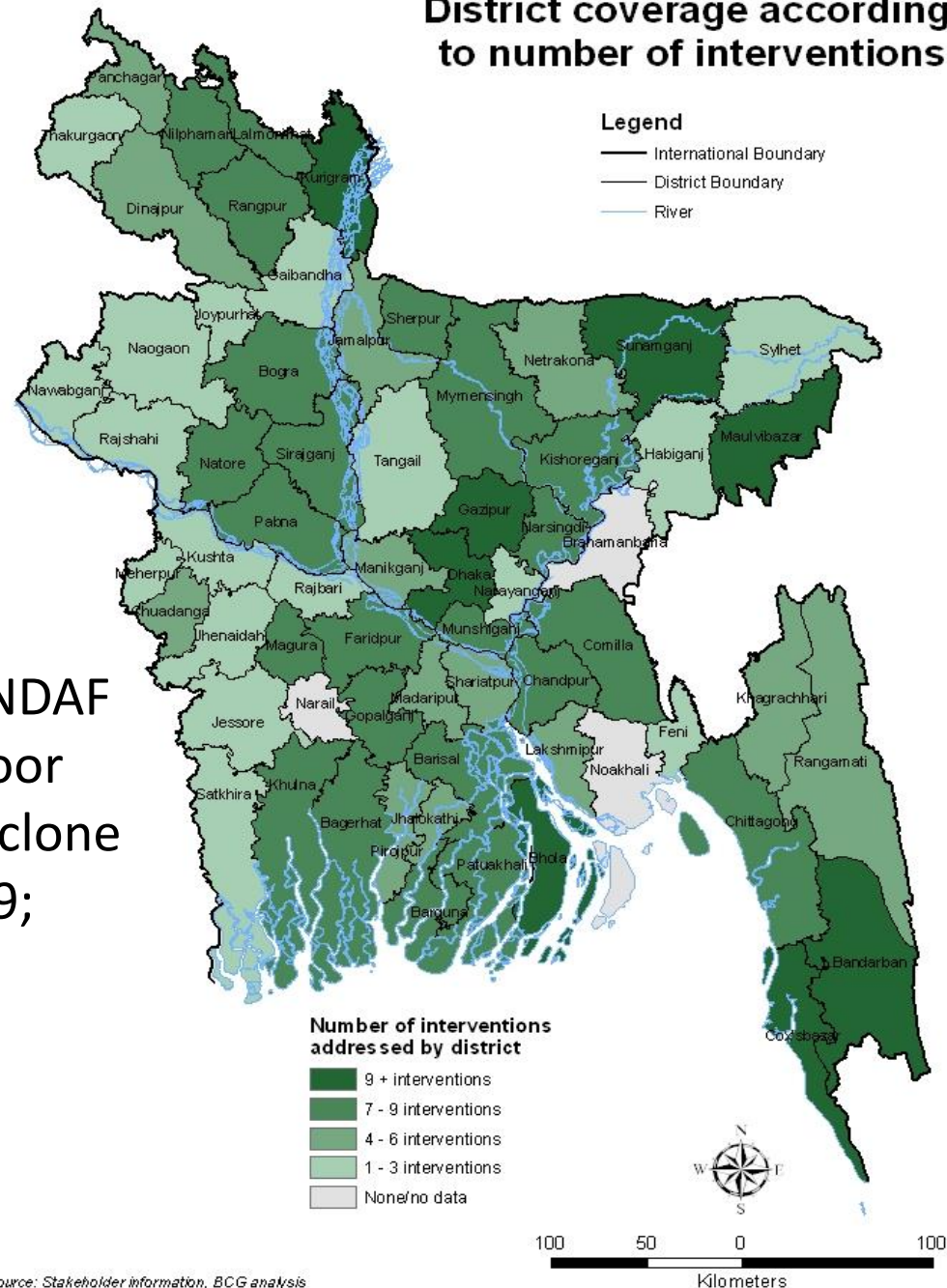
Country-context analysis:
High population density factor
Population 150.5 million

Focus on Satkhira (1 out of 64):

- one of 20 Dts prioritised in UNDAF
- high levels of poverty, ultra poor
- repeated natural disasters (cyclone Sidr in 2007; cyclone Aila 2009; excessive rainfall 2011)
- water-logging and salination
- poor nutritional status
- population of 2.2 million

REACH Workshop, Addis Ababa, November 2012

Bangladesh District coverage according to number of interventions





REACH

ACCELERATING THE SCALE-UP OF FOOD AND NUTRITION ACTIONS

Hosted by the World Food Programme



Satkhira District Stakeholder Mapping approach

Conducted July-November 2011 by REACH Country TEAM

- Design, conducting self-reported questionnaires, corresponding guidelines
 - Interviews
 - Secondary data review, DHS, surveys on food security/nutrition situation
 - Coverage maps, intervention coverage tables, survey charts
 - Data collection and analysis, produce charts, maps
 - Meetings, attendance at working groups, individual follow-ups, reporting
- 84 stakeholders (govt, INGOs, NGOs, academia, private sector)
 - Gathered information on 17 UN REACH-recommended interventions (food security, nutrition, water/sanitation, health)

Secondary data review supplemented with technical interviews, and coverage data collection

	Secondary data review	Technical interviews	Coverage data collection
Objective	<ul style="list-style-type: none">• Development of initial stakeholder profiles and interview tracking lists	<ul style="list-style-type: none">• Contact stakeholders involved in Satkhira and acquire the first findings of the landscaping phase	<ul style="list-style-type: none">• Estimation of coverage of the REACH focus interventions
Description	<ul style="list-style-type: none">• Compilation of several stakeholder profile lists to create a master interview list for Satkhira• Stakeholders include: GoB agencies, UN Agencies, Donors, INGOs, NGOs, Private Sector and Academia	<ul style="list-style-type: none">• Make a short list of stakeholders working in Satkhira with regards to REACH specific interventions• Meet stakeholders during mission to Satkhira• Conduct follow up interviews, via e-mail, phone and in person	<ul style="list-style-type: none">• Gather comprehensive data on interventions delivered by the stakeholder using an excel template questionnaire• Data collected on:<ul style="list-style-type: none">• <i>Target groups</i>• <i>Coverage estimates (beneficiary and budget)</i>• <i>Project duration</i>• <i>Activity type/Delivery channel</i>• <i>Partners and Donors involved</i>• <i>Upazila coverage</i>
Status	A list of 150 stakeholders created of GoB, UN agencies, INGOs/NGOs and other actors	Approx. 135 responses from all stakeholders contacted and interviewed	84 technical questionnaires, in addition to secondary data and information gathered at upazila level

Technical Questionnaire

Name of organization	
Contact person & details (email+phone)	
Current Intervention(s)	<div style="border: 1px solid black; padding: 5px;"> <p>Target group (Please select one or more options from drop-down menu or specify if "Other")</p> <p>If marked "Other" at Target group, please explain</p> </div>
Increase Micronutrient Intake	
1- Vitamin A supplementation	
2- Iron/folic acid supplementation/fortification	<div style="border: 1px solid black; padding: 5px;"> <ul style="list-style-type: none"> Children < 6 months Children 6-24 months Children 6-59 months Children < 5 years Pregnant mothers (antenatal) Lactating mothers (post-partum) Pregnant & lactating mothers of reproductive age </div>
3- Adequate salt iodization	
4- Micronutrient powder/Sprinkles	
5- Zinc supplementation/fortification	

Current Coverage: Current number of beneficiaries per intervention (as of 2011)	Current beneficiaries who receive multiple interventions (Please indicate whether your selected target group for each activity receives multiple interventions and include details)	Current Budget per Year per Intervention- Amount (Please indicate currency)
	2,000 Pregnant women, Vitamin A and Zinc	

Contact person & details (email+phone)	
Current Intervention(s)	<div style="border: 1px solid black; padding: 5px;"> <p>Program/project end date (Please select from drop-down menu)</p> </div>
Increase Micronutrient Intake	
1- Vitamin A supplementation	<div style="border: 1px solid black; padding: 5px;"> <ul style="list-style-type: none"> 2011 2012 2013 2014 2015 after 2015 </div>
2- Iron/folic acid supplementation/fortification	
3- Adequate salt iodization	
4- Micronutrient powder/Sprinkles	

Activity type (Please select one or more options from drop-down menu or specify if "Other")	
Activity(ies)	If marked "Other" at Activity type, please explain
<div style="border: 1px solid black; padding: 5px;"> <ul style="list-style-type: none"> Education/promotion Community Mobilisation Food/Tablet Supplement Physical asset/material supply Training/skill development Coordination/management Monitoring Other </div>	

Delivery channel (Please select one or more options from drop-down menu or specify if "Other")	
Channel(s)	If marked "Other" at Channel, please specify
<div style="border: 1px solid black; padding: 5px;"> <ul style="list-style-type: none"> Household/door-to-door prom Public hospitals & health centre CBOs/VOs TV/Radio SMS/text messages Billboards Private sector INGOs/local NGOs facilities </div>	

Stakeholders involved in REACH interventions, Satkhira

UN Agencies & Public Donors

4 UN Agencies:

- FAO
- UNDP
- UNICEF
- WFP

14 Public Donors:

- ADB
- AusAID
- CIDA
- DANIDA
- DFID
- ECHO and EU
- GTZ/GIZ
- Japan/JICA
- Norway Royal Embassy
- SIDA
- SDC
- USAID
- World Bank

Government

4 Departments:



- DAE- *Department of Agricultural Extension*
- DPHE- *Department of Public Health Engineering->> (BWDB)*
- DWA- *Department of Women's Affairs*
- DGHS- *Director General of Health Services*

INGOs and NGOs

19 INGOs:

- ACF
- Alive & Thrive
- BRAC
- Care Bangladesh
- Caritas Bangladesh
- Friendship International
- Hellen Keller International
- HYSAWA
- Oxfam Bangladesh
- Relief International
- Save the Children BD
- Solidarite International
- Water Aid
- World Vision Bangladesh
- World Fish

35 NGOs:

- Agrogoti Sangstha
- Ashroy Foundation
- Bangladesh Red Crescent Society/IFRC
- Bhomisto
- EADA
- JCF
- Manusher Jonno Foundation
- Mukti Foundation
- Muslim Aid International
- NGO Water Forum
- Nobo Jibon
- PKS /Smiling Sun
- Practical Action BGD
- SETU, Kushtia
- SETU, Satkhira
- SHUSHILAN
- TMSS
- Uttaran
- VOSD

Private sector

PLB Partners
Unilever
Kraft Food
DSM

Stakeholder Map Satkhira

	Treatment Interventions		Preventative Interventions							
	Therapeutic/Supplementary feeding	Zinc supplementation	Breast-feeding/Complementary feeding	Vitamin A suppl/Deworming	Micro-nutrient powder	Hand-washing with Soap	Household water treatment	Latrine provision, usage, promotion	Local Homestead food production	Transfer and safety nets
Donor	ECHO	USAID CIDA	JICA EU	USAID WB SIDA	USAID	USAID AusAid EU-ECHO	CIDA AusAid DANIDA EU-ECHO	ADB EU ECHO	EU DFID SDC	ECHO DFID ChristAid
Catalyst	WFP	UNICEF	Alive & Thrive, CARE, FAO	UNICEF MI	GAIN, UNICEF MI	UNICEF, Care WVB	UNICEF NGO Forum DWSS	UNICEF NGO Forum Oxfam	FAO	WFP, UNDP
GOB and its programs		MHFW DPHE Civil Surgeon	MHFW IPHN	MHFW DPHE Civil Surgeon		MHFW DPHE	Ministry of Agriculture MHFW	LGED	Ministry of Agriculture DAE	DWA, Min. of Finance
Implementers	Shushilan	BDRCS, RKH PKS EADA NoboJibon	BRAC, Setu Satkhira, VOSD, Bhumijo Fondation	BDRCS Unnayan BRAC VOSD SetuSatkhir	BRAC, PKS, VOSD Shushilan EADA NoboJibon	HYSAWA Solidarit PKS KSDO Mukti NaltaHos	WaterAid, IDEAL, Setu Kushtia, HYSAWA, Concern	Solidarites Uttaran, Water Aid HYSAWA Unnayan	BRAC, IDEAL, HKI, TMSS Muslim Aid Shushlian	BRAC Uttaran BDRCS, IDEAL, Shushlan Bhomist
Private sector						Unilever	Unilever	Unilever	Kraft, Unilever	
Delivery Channel	Field-worker; nutrition centres	Health centers, Door to door promotion	Clinics, mother-support-groups; door-to-door promotion,	Awareness campaign/, health centres, house visits CBOs	Para center/workers; pilots, house visits,	Group teaching; door-to-door; volunteers	Domestic visits; trainings in CBOs, VOs	Door-to-door promotion	Field workers; workshops, community Centers door-to-door:	local banks credit worker/posts door-to-door; CBOs

Key Findings

Interventions

- Over 50% of the ongoing projects will be completed in 2011 and 2012
- Certain overlapping of interventions
- *Hand washing with soap*
- *Nutrition education*
- *Breastfeeding education*
- Low coverage of therapeutic and supplementary feeding post Nov. 2011(Emergency Response)
- Large portion are emergency response-type = Over 50% of the 2011 and 2012 total budgets

Appear to be the interventions more commonly implemented in 2011

Coverage

- Very limited coverage of *adolescent girls*
- Surprising decrease in investment per intervention (particularly between 2012 and 2013)
- Disparity in the number of stakeholders providing *education/awareness* only as compared to *supply*

Most UN REACH-recommended interventions coverage is low

	Key problems	Problem Indicator	Status	Interventions	Coverage
BEHAVIOR/ CARE	Poor IYCF Practices	% infants breastfed within one hour of birth	36 %	Early initiation of breastfeeding promotion	
		% infants 0-6 months exclusively breastfed	48.7%	Exclusive breastfeeding promotion	
		% infants 6-8 months who receive solid, semi-solid or soft foods along with breastmilk	57.6%	Complementary feeding promotion	
HEALTH	Soil, water borne & endemic diseases	% households using water treatment methods	6.7%	Household water treatment, education and equipment	
		% households with access to improved water source	85.5%		
		% population washing hands prior to eating	58.8%	Hand washing with soap	
		% children U5 with soil transmitted helminthes	44.6%	De-worming	
		% households with access to hygienic latrines	25.3%	Latrine provision and usage promotion	
	% children U5 with diarrhea	9.8%	Zinc for diarrhea		
High prevalence of acute malnutrition	% children 6-59 months with sev. acute malnutrition	3.4%	Therapeutic management of SAM		
	% children 6-59 months with mod. acute malnutrition	10.5%	Supplementary feeding for MAM		
FOOD	Insufficient macro and micronutrient intake	% children 9-11 months receiving Vit A supplements	82%	Vitamin A supplementation for children	
		% children 12-59 months receiving Vit A supplement	96%	Vitamin A supplement for postpartum women	
		% postpartum women receiving Vit A supplement	39%		
		% children U5 with iron deficiency anemia	67.9%	MNPs for children U5	
		% of pregnant women with iron deficiency anemia	38.8%	IFA supplements for pregnant women	
		% households consuming salt adequately iodized	51%	Availability of adequately iodized salt	
	Insufficient access to food	% households with poor/borderline food consumption scores	25%	Nutrition education for dietary diversity	
		% population undernourished	26%	Local homestead food production	
	% population living under national poverty line	40%	Conditional cash transfers		

National Status

REACH-BCG 2010 (National Data)

REACH Satkhira 2011-2012 Coverage



< 5% coverage



36 – 64 % coverage



> 95% coverage



5 – 35% coverage



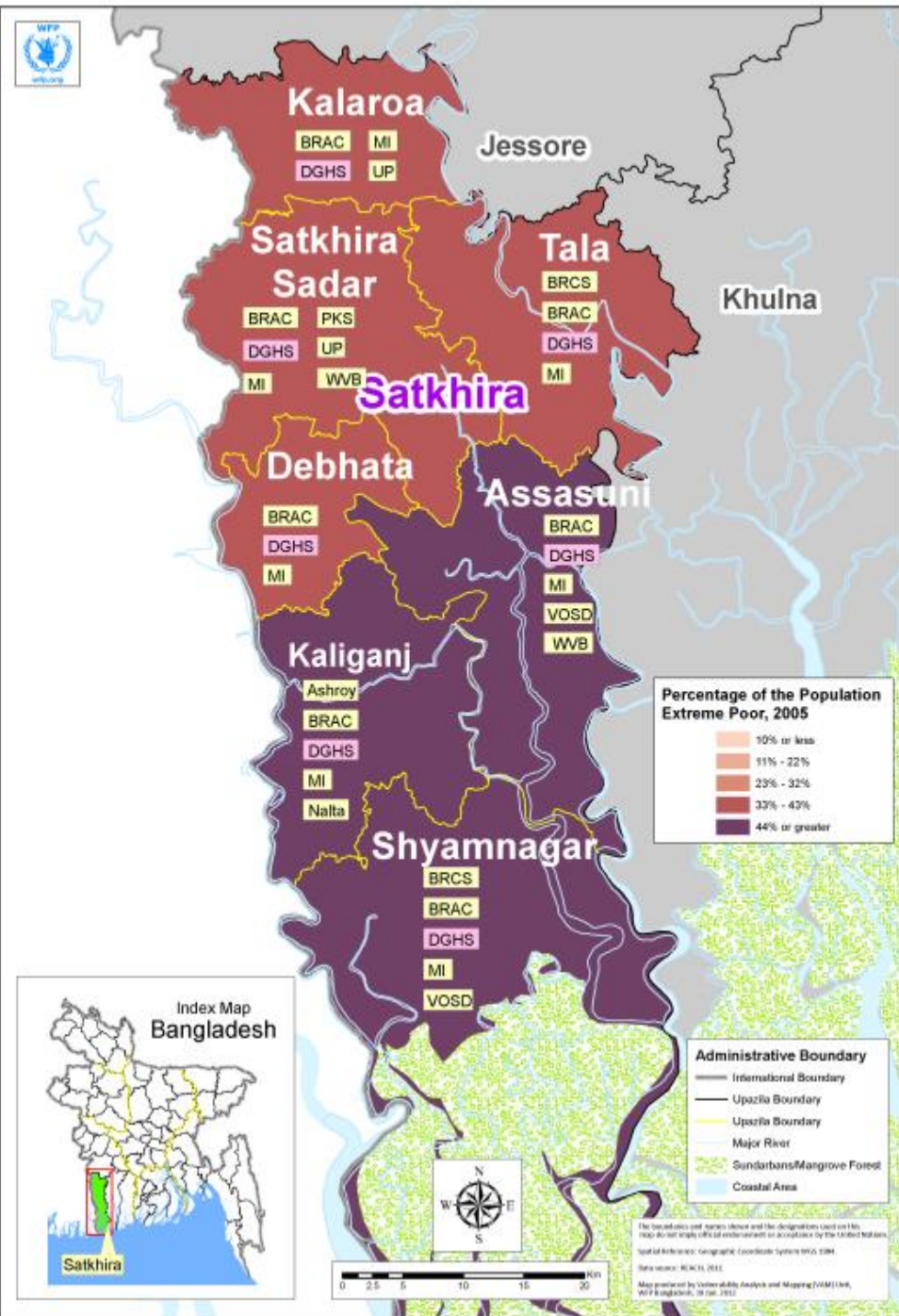
65 – 95 % coverage





Vitamin A supplementation

Intervention factsheet – Upazila level estimation



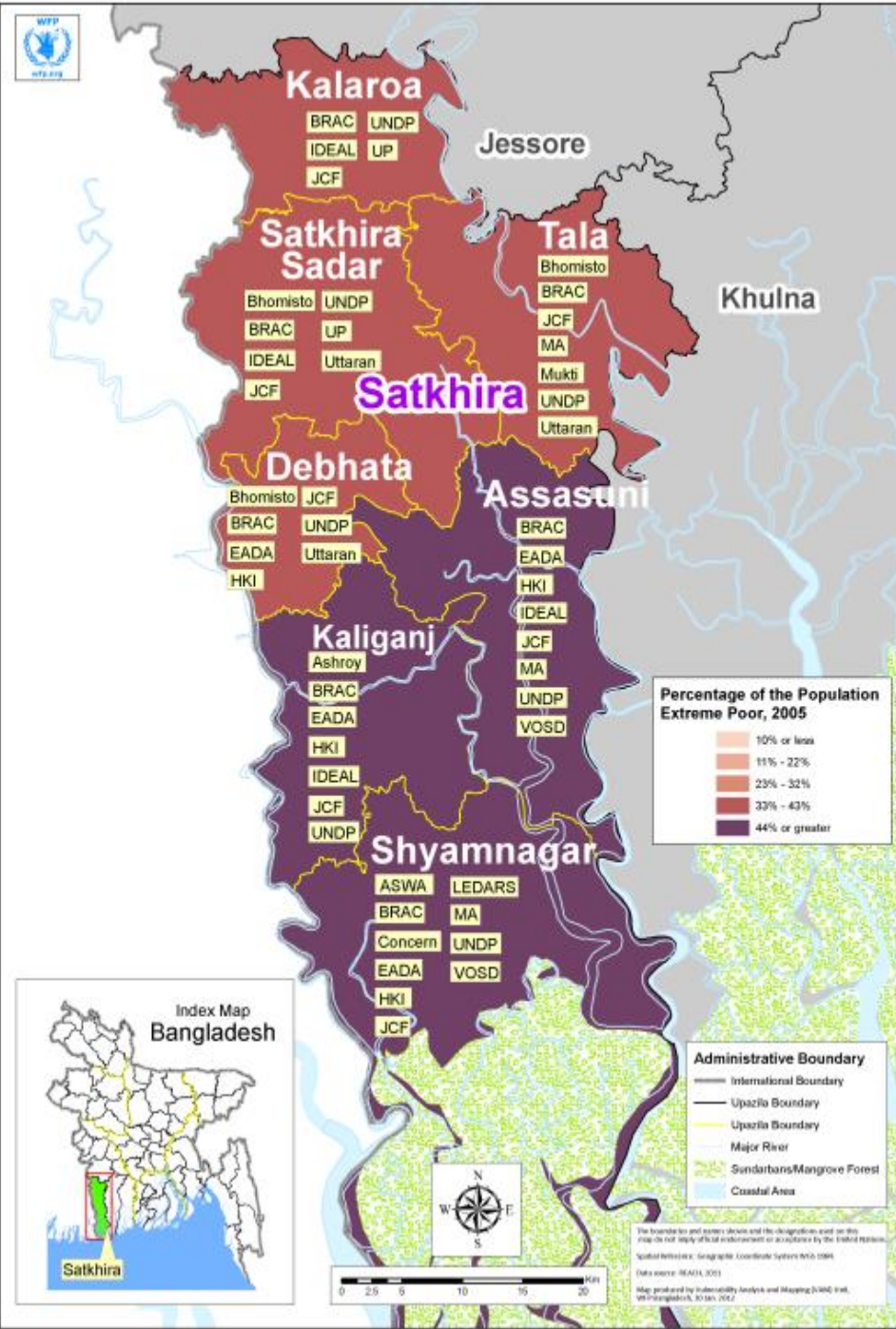
Selected stakeholder activities and coverage

Coverage indicator	% children 9-11 months receiving Vit A supplements % children 12-59 months receiving Vit A supplement % postpartum women receiving Vit A supplement		
National coverage	82, 96, 39%	Satkhira coverage	52, 85, 19%
Stakeholder (Total=22)	Est Benef. Covered	Upazilas	Est Budget in USD
MoH/NNS Civil Surgeon	230,548	All 7	\$274, 714 All programs
Micronutrient Initiative <i>*implementing through GoB and UNICEF</i>	300,000	All 7	\$8,572
WORLD VISION BD	19,961	Assa,SS	\$6,725
Bangladesh Red Crescent Society/IFRC (w GoB)	7,800	Shym, Tala	---
BRAC_CFRP_TUP (Unilever)	4,055	All 7	\$2.8 mil Multiple Projects
PKS/ Smiling Sun	5,280	SS	\$603
Nalta HCH Foundation	799	Kali	\$81,744 Multiple Projects
Ashroy Foundation	2,040	Kali	\$486
VOSD	5,150	Assa,Shym	\$3,614
Unnavan Parishad	6,480	SS, Kala	\$3,570



Nutrition education for dietary diversity

Intervention factsheet – Upazila level estimation



Selected stakeholder activities and coverage

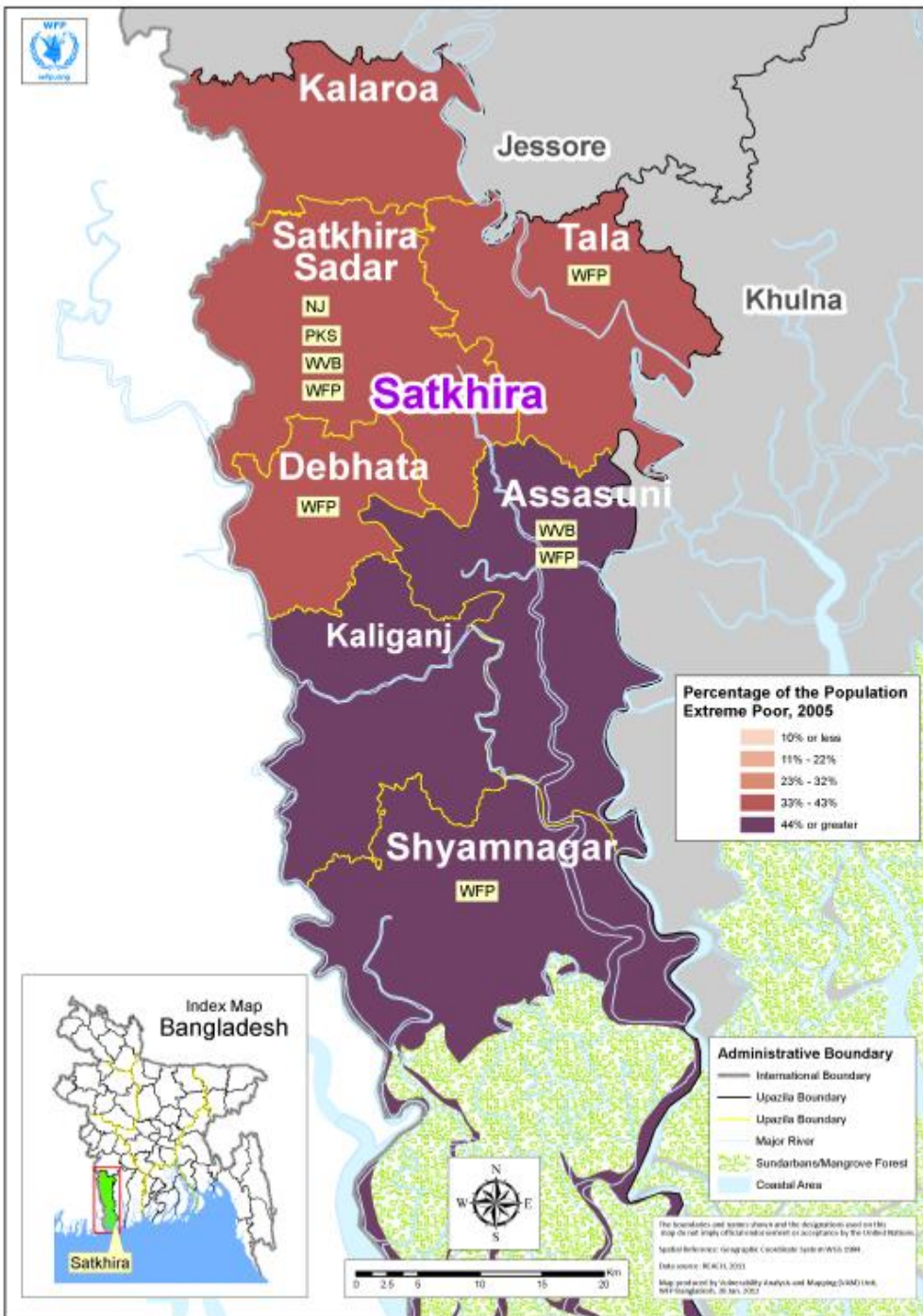
Coverage indicator	% households with poor/borderline food consumption scores			
	National coverage	Satkhira coverage		
	25%	22%		
Stakeholder (Total=30)	Est Benef. Covered	Est Benef. Covered HH	Upazilas	Est Budget in USD
UNDP*implementing trough Shushilan,Uttaran	24,570	4,914	All 7	Multiple Projects
CONCERN WORLDWIDE *implementing though Shushilan	20,000	4,000	Shym	\$28,571 Multiple Projects
Hellen Keller Intl (Planned)	4,800	960	Assa, Deb, Kali, Shym	\$1 mil
WORLD VISION BD	130,970	26,194	Assa,SS	\$4,461
BRAC	20,275	4,055	All 7	\$2.8 mil Multiple Proj
Muslim Aid	5,000	2,500	Assa,Shym Tala	\$2,857
Uttaran (ER)	3,000	1,500	Deb,SS, Tala	\$41,460
Unnayan Parishad	32,400	6,480	Kala,SS	\$3,570
IDEAL	27,565	5,513	Assa, Kala, Kali,SS	\$1,506
LEDARS	2,400h	480	Shym	\$7,857

Supplementary feeding for MAM

Intervention factsheet – Upazila level estimation

Selected stakeholder activities and coverage

Coverage indicator	% children 6-59 months with mod. acute malnutrition		
National coverage	10.5%	Satkhira coverage	...%
Stakeholder (Total=5)	Est Benef. Covered	Upazilas	Est Budget in USD
WFP (ER) implementing through Shushilan	17,500	Assa, Deb, Kala, SS, Tala	\$1.5 mil+ \$1.2 mil
WORLD VISION BD	31,211	Assa, SS	\$3,572
PKS/ Smiling Sun	5,280	SS	\$67,886
Noboiibon	1,365	SS	\$384



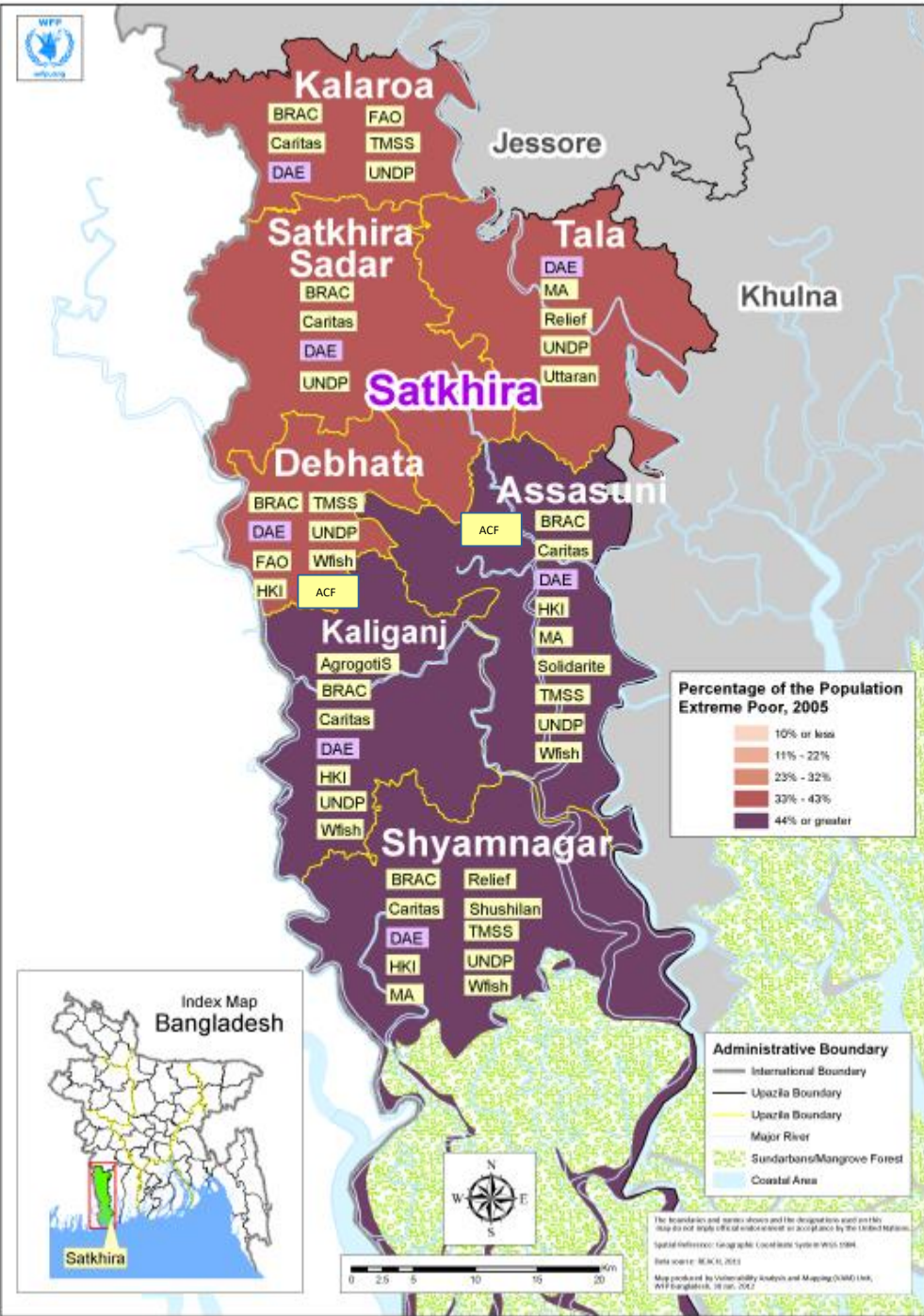
Stakeholders are only providing “education/awareness” in Supplementary Feeding for MAM. Only supply being provided in Satkhira currently by WFP, as part of emergency response activity (as of November 2011).



Local homestead food production

Intervention factsheet – Upazila level estimation

Selected stakeholder activities and coverage

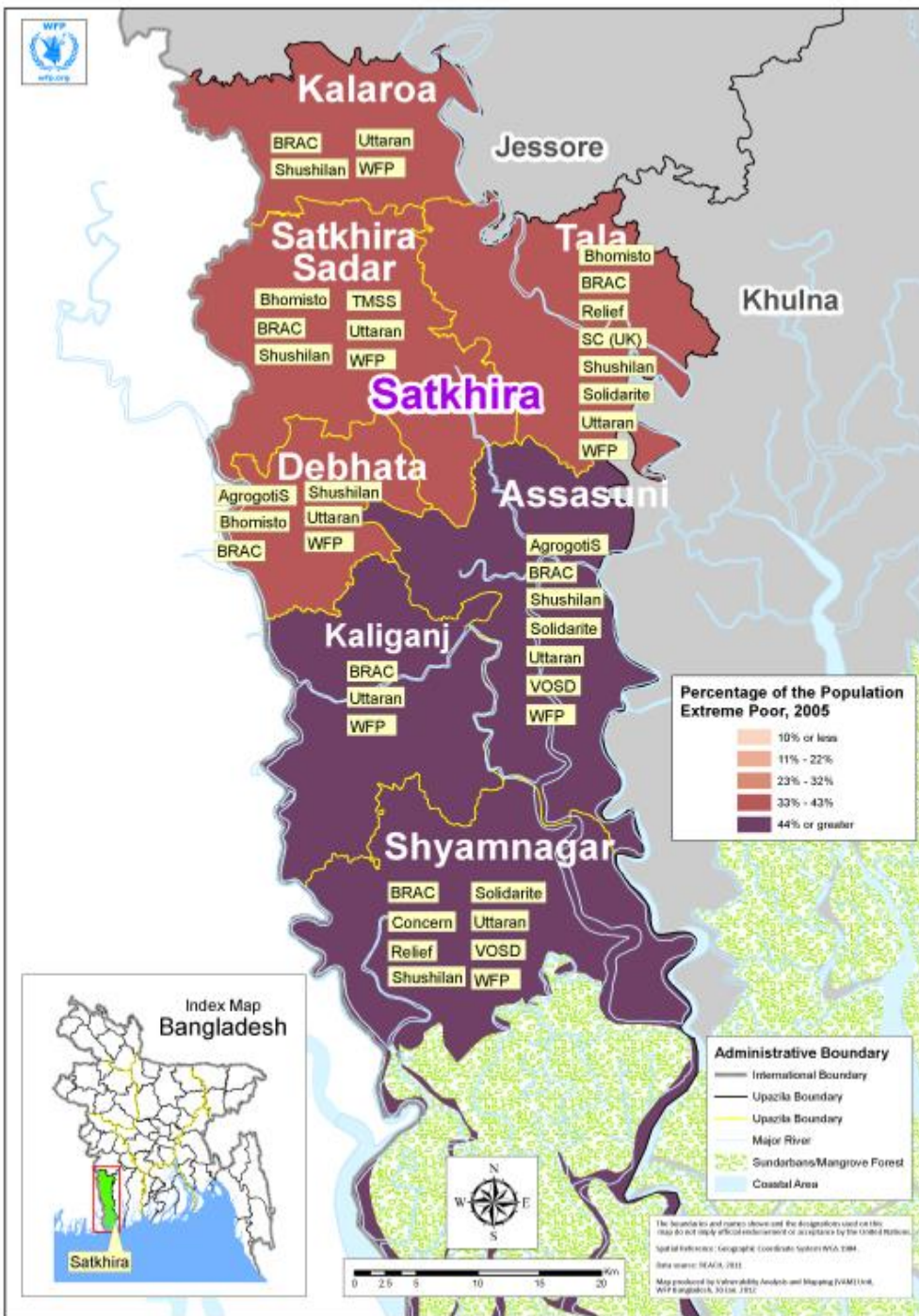


Coverage indicator	% population undernourished			
	National coverage	26%	Satkhira coverage	...% (to be updated)
Stakeholder (Total=34)	Est Benef. Covered	Est Benef. Covered HH	Upazilas	Est Budget in USD
ACF_ECHO_ER <i>*implementing through Shushilan</i>	5,250	1,050	Assa, Deb	(Planned) \$130,041
FAO <i>*implementing through Ashroy, TMSS</i>	9,000	1,800	Deb, Kala	Multiple Projects
UNDP <i>*implementing through Shushilan, Uttaran</i>	24,570	4,914	All 7	Multiple Projects
Hellen Keller Intl (planned)	4,800	960	Assa, Deb, Kali, Shym	\$1 mil
Solidarites Intl	11,250	2,250	Assa	\$29,286
World Fish	3,150	630	Assa, Deb, Kali, Shym	\$93,330
WORLD VISION BD (ADP)	2,050	410	Assa, SS	\$1,000
BRAC	227,875	45,575	All 7	\$2.8 mil Multiple Projects
Shushilan	14,000	2,800	Shym	\$102,215
TMSS	1,107	222	SS	\$22,140
Progoti SUS	2,000	400	Assa, Shym	\$190,000



Social Transfers Safety Nets

Intervention factsheet – Upazila level estimation
Selected stakeholder activities and coverage



Stakeholder (Total=21)	Est Benef. Covered	Est Benef. Covered HH	Upazilas	Est Budget in USD
DWA <i>*implementing through Bhomisto</i>	5,590	1,118	All 7	\$67,080
WFP <i>*implementing through GoB and Shushilan *</i>	165,000+ 63,000	5,000+ 28,000+ 12,600	Assa, Deb, SS, Kal, Tala, Shym	\$1.7 mil + \$1.5 mil + \$2.5 mil
Relief Intl (Planned)	1,750	350	Shym, Tala	\$100,000 ('12-'13)
Concern Worldwide <i>*implementing through Shushilan</i>	44,505	8,901	Shym	2,645,313
Save The Children UK <i>*implementing through Uttaran</i>	11,000	2,200	Tala	\$96,150
ACF* <i>implementing through Agrogoti</i>	23,000	4,600	Assa, Deb	\$199,793
BRAC	167,125	33,425	All 7	\$2.8 mil Mult Proj
Shushilan	43,050	8,610	SS, Shym, Tala	\$499,847

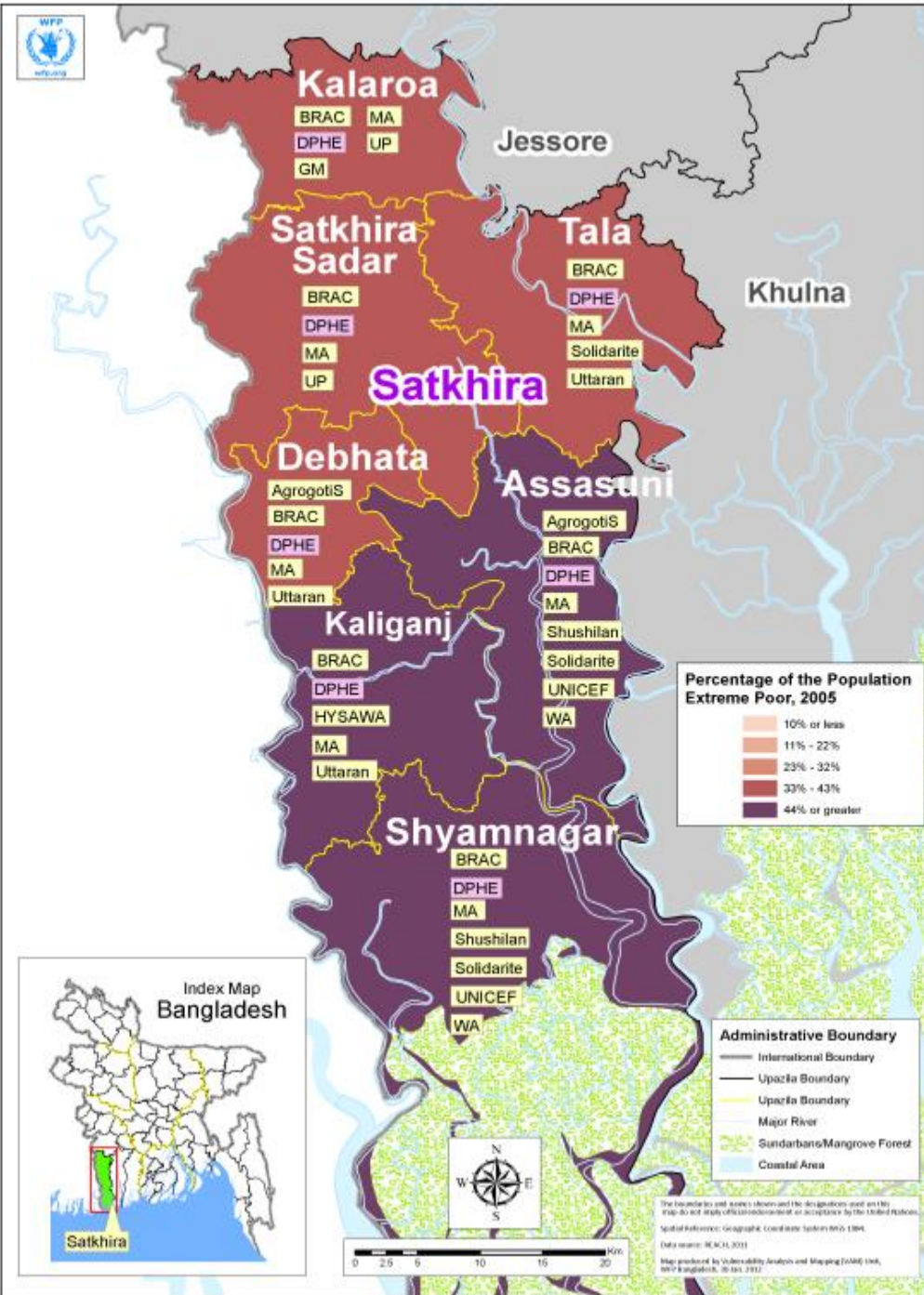
Coverage indicator: % population living under national poverty line
National coverage: 40%
Satkhira coverage: ...%



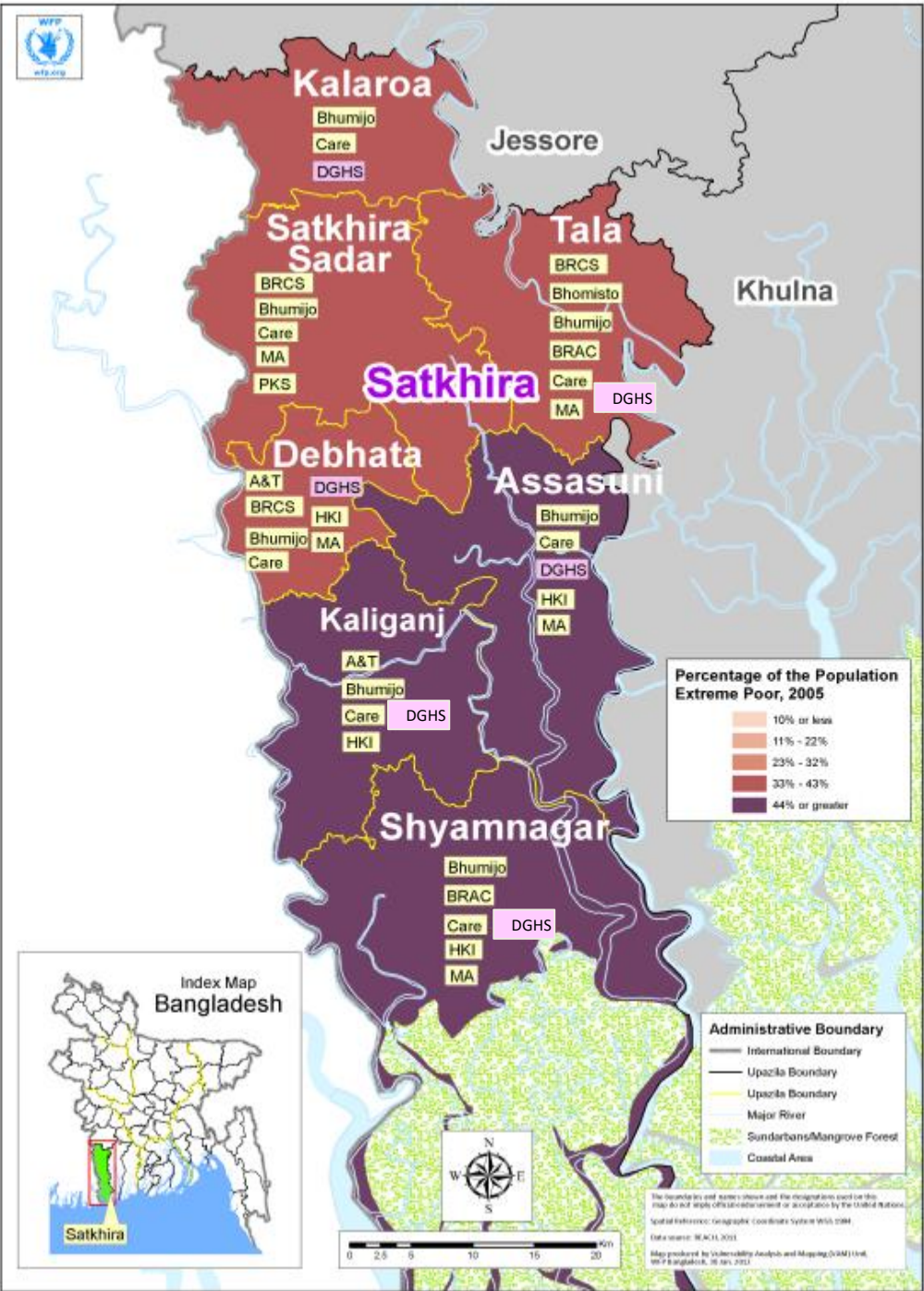
HH water treatment, education and equipment

Intervention factsheet – Upazila level estimation

Selected stakeholder activities and coverage



Coverage indicator	% households using water treatment methods % households with access to improved water source			
National coverage	92%	Satkhira coverage	7, 87%	
Stakeholder (Total=40)	Est Benef. Covered	Est Benef. Covered HH	Upazilas	Est Budget in USD
DPHE	100%		All 7	\$42,857
UNICEF <i>*implementing through Shushilan</i>	3,400	680	Assa, Shym	\$42,857
Solidarites Intl	47,650	9,530	Assa, Shym	\$63,143
Save The Children UK <i>*implementing through UttaranER</i>	Approx 50,000	10,000	Tala	\$48,114
HYSAWA	14,000	2,800	Kali	\$160,000
Water Aid (Planned 2012)	25,667	5,134	Assa, Shym	\$139,089
NGO Water Forum <i>*implementing through other NGOs (Progoti, Shushilan, Uttaran)</i>	82, 864	16, 573	All 7	Multiple Projects
Uttaran (ER)	15,360	3,072	All 7	\$148,480
IDEAL	40,000	8,000	Assa, Deb, Kali	\$6,429
Agrogoti Sangstha (ER)	13,000	2,600	Assa, Deb	\$41,764 ('12)



Exclusive breastfeeding

Intervention factsheet – Upazila level estimation

Selected stakeholder activities and coverage

Coverage indicator	% infants 0-6 months exclusively breastfed		
National coverage	48.7%	Satkhira coverage	47%
Stakeholder (Total=20)	Est Benef. Covered	Upazilas	Est Budget in USD
MoH/NNS Civil Surgeon	100 %	All 7	\$274,714 All programs
UNICEF* implementing through GoB	---	All 7	---
Alive & Thrive	8,505	Deb,Kali	--
Hellen Keller Intl (Planned)	960	Asa,Deb, Kali,Shym	\$1 mil Multiple Projects
CARE Bangladesh	100 %	All 7	\$3 mil Multiple Projects
PKS/ Smiling Sun	5,313	SS	\$1,371
Bangladesh Red Crescent Society/IFRC (w GoB)	3,042	Shym,Tala	--- (Educ)
Muslim Aid	1,000	All 7	\$1,429
Bhomisto	1,118	Deb,SS,Shym, Tala	\$4,800 Multiple Projects
Nalta HCHFoundation	800	Kali	\$81,714 Multiple Projects

Estimated Supply Coverage for Selected Interventions in 2011

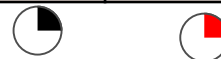
Local Homestead Food Production

People in need	People receiving assistance (A+S)	Supply
2 157 786	407 385	332 224
100%	19%	15%



Socl. Transfers and Safety Nets (Condl. Cash Transfers)

People in need	People receiving assistance (A+S)	Supply
2 157 786	325 030	316 820
100%	15%	15%



MNP

People in need	People receiving assistance (A+S)	Supply
90 279	20358	15078
100%	23%	17%



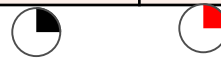
Household Water Treatment, Educ., and Equipment

People in need	People receiving assistance (A+S)	Supply
2 157 786	433631	235728
100%	20%	11%



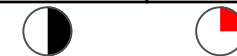
Latrine Provision and Usage

People in need	People receiving assistance (A+S)	Supply
2 157 786	315161	213 175
100%	17%	10%

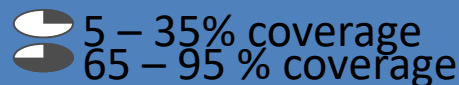


Complementary feeding

People in need	People receiving assistance (A+S)	Supply
2 157 786	520 648	11505
100%	47%	9%



National coverage



Committed investment

Interventions	2011	2012	2013	2014	2015
Vitamin A supplementation	27,612	10,228	7,696	5,700	5,700
Iron/folic acid supplementation/fortification	34,770	7,818	7,818	5,700	5,700
Adequate salt iodization	6,981	1,993	1,920	0	0
Micronutrient powder	12,127	186	0	0	0
Zinc supplementation/fortification	1,766	154	29	0	0
Nutrition education for dietary diversity	64,532	12,192	10,714	2,300	2,300
Therapeutic feeding for SAM	68,326	532,928	0	0	0
Supplementary feeding for MAM	71,842	1,303,944	1,500	1,500	1,500
Local Homestead food production	1,680,962	844,893	176,603	14,286	0
Transfers and safety nets	2,849,642	4,577,271	150,782	50,711	22,140
House-hold water treatment	897,290	853,433	698,247	191,125	8,000
Hand washing with soap	151,549	34,951	8,494	4,814	4,400
Deworming	1,502	114	0	0	0
Latrine provision and usage promotion	741,190	186,239	88,492	64,892	6,142
Early initiation of breastfeeding	8724	3745	2557	571	571
Exclusive breastfeeding	4,279	2,438	2,000	571	571
Complementary feeding	3,111	2,704	1,500	0	0
TOTAL in USD	6 626 205	8 375 231	1 158 352	342 170	57 024
TOTAL in Taka	463 834 350	586 266 170	81 084 640	2 3951 900	3 991 680

+ Committed Aggregated Investment over 5 years (2011-2015): US\$13.3 million

Organizations	Budget in USD	Comments
DAE/MOA	9, 929	From 2011 to 2014
MoH/NNS	274,714 (Per Year)	From July 2011 to June 2015
ADB*through LGED	285,714	Planned From 2012 to 2014
CARE	3,000,000	From 2011 to 2015
Hellen Keller International	1,000,000	From 2011 to 2015
Friendship	1,500,000	From 2011 to 2015
Christian Service Society	2,113,453	From 2011 to 2013
Others**	4,031,223	From 2011 to 2014

GoB : NNS and other GoB investments to be added as data will be available

≈ RATE PER YEAR

↑26%*

↓86%

↓70%

↓83%

MAY 2012



REACH

ACCELERATING THE SCALE-UP OF FOOD AND NUTRITION ACTIONS

Hosted by the World Food Programme



Successes

- Stakeholder mapping: first of its kind at district level in Bangladesh
- Is being used in individual meetings with different sectors to raise awareness and discuss implications
- High level of interest among district stakeholders
- Maps and graphics well received
- Interest in replication in UNDAF and MDG-F Districts, not possible in all 64 Districts so prioritise



REACH

ACCELERATING THE SCALE-UP OF FOOD AND NUTRITION ACTIONS

Hosted by the World Food Programme



Challenges and constraints

- Not covered: quality of programmes, capacity of institutions to scale-up programme
- Needs to be updated (gaps, policy change implications)
- Some reluctance to share info
- Disaggregated data, especially on costing, often unavailable
- Hard to assess multiple ‘package interventions’
- What mechanisms exist, what resources exist/are needed?
- NGOs express need for multisectoral stocktaking, analysis and coordination but see structural gaps in a centralised system



REACH

ACCELERATING THE SCALE-UP OF FOOD AND NUTRITION ACTIONS

Hosted by the World Food Programme



Opportunities

- Satkhira District Commissioner will convene an innovative multisectoral discussion meeting in January 2013 to:
 - Review stakeholder mapping outputs and process, update map
 - Participatory assessment of process: experiences of stakeholders, lessons learned, value added
 - Participatory exercise: is a multi-sectoral process for coordination and planning at district level? If so, how initiate?
- Satkhira experience to be brought into national debate by district voices at planned National Advocacy Event in March/April 2013
- Pilot Use of MST in Satkhira – potential innovation